

# Career Pathways



**Program vision** » After completing core high school coursework, students have the opportunity to enter a career pathway and gain the academic, technical, and workplace knowledge and skills allowing for seamless continuation to postsecondary credentials. Students can then transition to the workplace or continue to pursue graduate programs.



**Aerospace  
& Advanced  
Manufacturing**



**Energy &  
Sustainability**



**Medical &  
Health Careers**



**Information &  
Communication  
Technology**



**Education  
Careers**



**Business &  
Professional  
Services**



# Career Pathway Readiness Opportunities



## Medical & Health Careers



### School based learning

Career and technical education (CTE) courses as well as integration of career skills, knowledge and advising into district's core courses.

Core Courses	Exploratory Courses	Advanced Courses	Skill Center Courses
Algebra 1 and 2	Anatomy and Physiology	AP Psychology	Pre-Nursing (NAC)
Biology in the Environment	Biotechnology	AP BIO	Medical Terminology
Chemistry	Family Health	AP CHEM	
	Nutrition 1 and 2	AP Seminar	
	Sports Medicine 1, 2 and 3	AP Physics	
	Health Science & Medical Terms	AP Statistics	



### Extended learning

Education that continues beyond the school day and that complements school based learning by improving academic performance, and inspiring students to discover their passions.

- ☞ Health Occupations Students of America (HOSA)
- ☞ Skills USA
- ☞ Washington Career Technical Sports Medicine Association (WCTSMA)



### Work based learning

Often in partnership with industry/community professionals, learning experiences that engage students in acquiring and applying work-related knowledge and skills.

- ☞ Medical Careers Internship
- ☞ Sports Medicine Internship

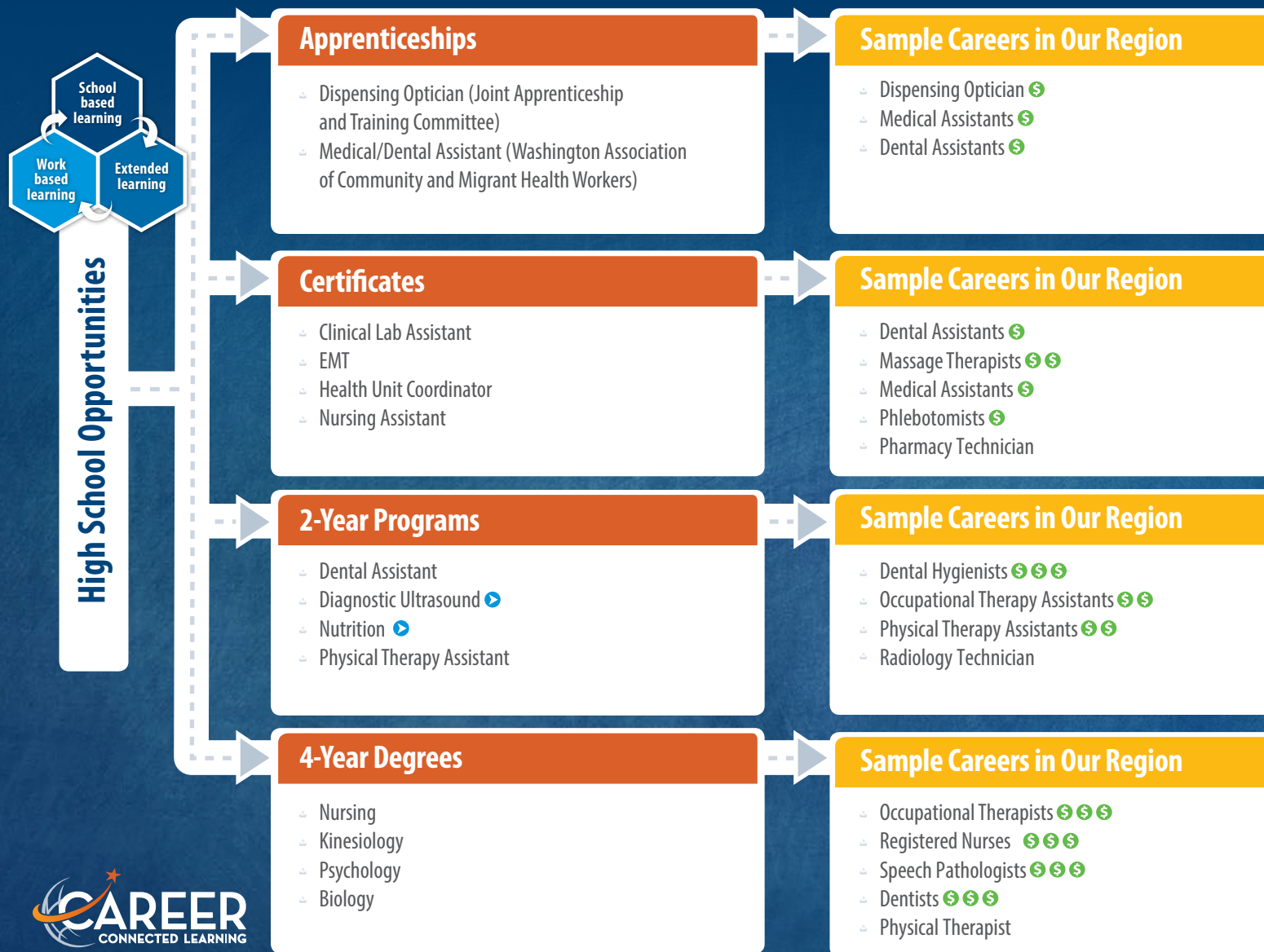


For more information regarding Everett Public Schools Career Pathways, please contact [careerconnected@everettsd.org](mailto:careerconnected@everettsd.org); each high school's career specialist and counselors can review this document with students and families.

Document updated: Feb. 2020

# Pathways to Medical & Health Careers

Medical and health careers are all about helping others lead health and productive lives. With the aging population and other factors, the number of people in need of care is growing quickly, meaning that the number of jobs in the medical field is forecast to grow.



## SKILLS

- Social perception
- Service orientation
- Strong math & science skills
- Good decision-making
- Active listening

## TRANSFER

▶ = Transfer degree only

## SALARIES

\$ = Max \$25/hr  
 \$\$ = Max \$26-40/hr  
 \$\$\$ = Max > \$40/hr

For more information regarding Everett Public Schools Career Pathways, please contact [careerconnected@everettsd.org](mailto:careerconnected@everettsd.org); each high school's career specialist and counselors can review this document with students and families.

Document updated: Feb. 2020

# Career Pathway Readiness Opportunities



## Aerospace & Advanced Manufacturing



### School based learning

Career and technical education (CTE) courses as well as integration of career skills, knowledge and advising into district's core courses.

Core Courses	Exploratory Courses	Advanced Courses	Skill Center Courses
Algebra 1 and 2	CAD and 3D Printing (MS)	AP Physics	Electric Engineering Technology
Geometry	Astronomy and Aerospace Engineering	AP Capstone: Research in Science and Engineering	Precision Machining
Physics in the Universe	Engineering Your World		Welding and Metal Fabrication
	Robotics		Foundations of Manufacturing
	Mechatronics		



### Extended learning

Education that continues beyond the school day and that complements school based learning by improving academic performance, and inspiring students to discover their passions.

- ☛ Technology Student Association (TSA)
- ☛ Robotics (FRC/FTC/FLL/FLLJN/Drone League)
- ☛ SkillsUSA
- ☛ TARC - Team
- ☛ America Rocketry



### Work based learning

Often in partnership with industry/community professionals, learning experiences that engage students in acquiring and applying work-related knowledge and skills.

- ☛ Engineering Manufacturing Internship
- ☛ Advanced Manufacturing Youth Apprenticeship



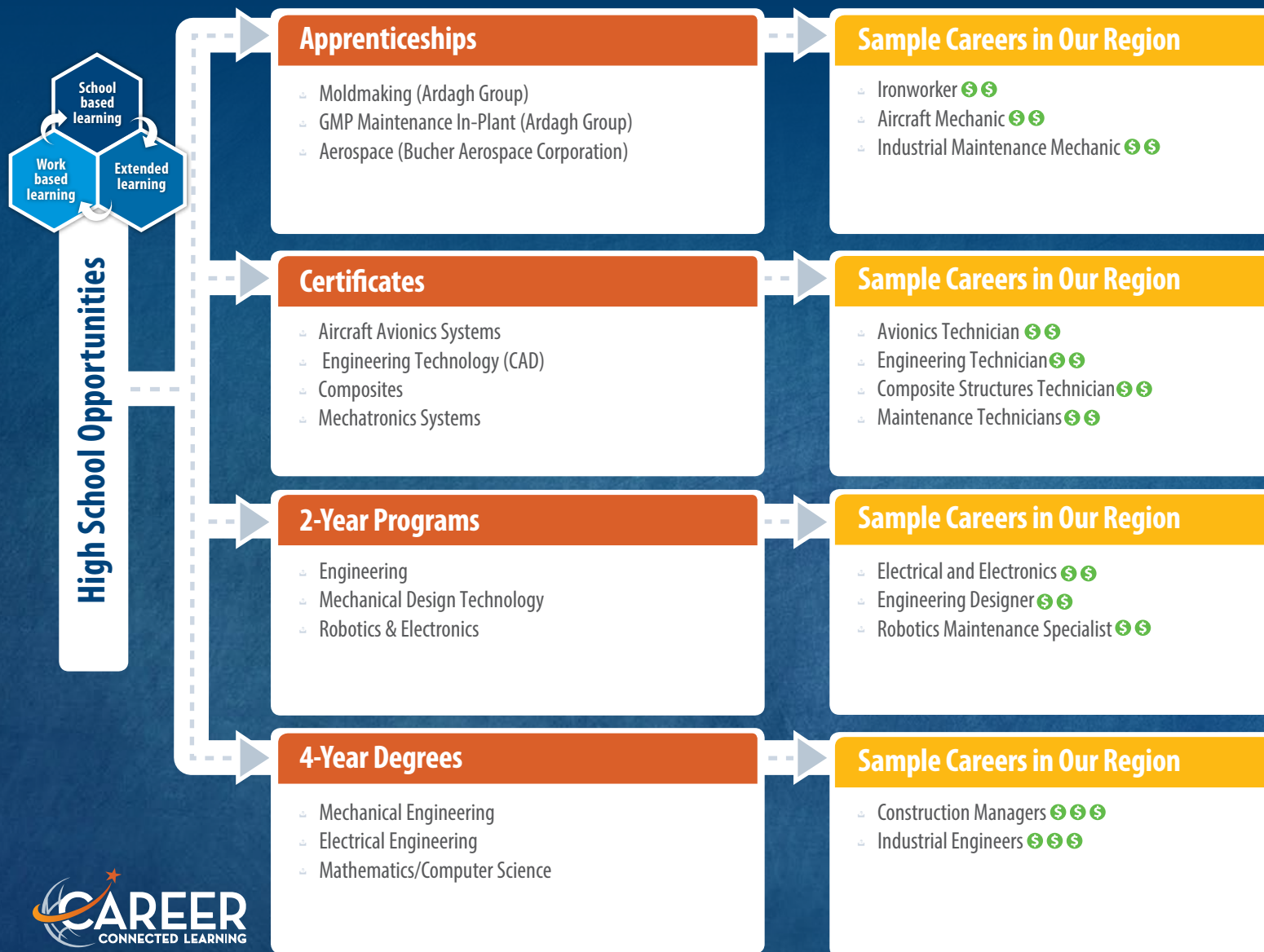
For more information regarding Everett Public Schools Career Pathways, please contact [careerconnected@everettsd.org](mailto:careerconnected@everettsd.org); each high school's career specialist and counselors can review this document with students and families.

Document updated: Feb. 2020

# Pathways to Aerospace & Advanced Manufacturing Careers



People in aerospace and advanced manufacturing work with airplanes, robotics, 3-D printers, and other interesting tools. The number of people needed to fill jobs in this sector is growing rapidly, so there are many opportunities to get started.



## SKILLS

- Troubleshooting
- Good writing skills
- Hands-on work
- Identifying problems
- Active listening

## TRANSFER

▶ = Transfer degree only

## SALARIES

- 💰 = Max \$25/hr
- 💰💰 = Max \$26-40/hr
- 💰💰💰 = Max > \$40/hr

For more information regarding Everett Public Schools Career Pathways, please contact [careerconnected@everettsd.org](mailto:careerconnected@everettsd.org); each high school's career specialist and counselors can review this document with students and families.

Document updated: Feb. 2020

# Career Pathway Readiness Opportunities



## Information & Communication Technology



### School based learning

Career and technical education (CTE) courses as well as integration of career skills, knowledge and advising into district's core courses.

Core Courses	Exploratory Courses	Advanced Courses	Skill Center Courses
Intro to Art	Intro to Graphic Design	AP Studio Art (2D and 3D drawing)	Animation
English 1, 2 and 3	Digital Photography 1, 2 and 3	AP Computer Science Principles	Video Game Design
Algebra 1 and 2	Graphic Design 1, 2 and 3	AP Computer Science A	
	Publications 1, 2 and 3		
	Technical Theater 1, 2, and 3		
	Video Production 1, 2, and 3		
	Web Design		
	Exploring Computer Science		



### Extended learning

Education that continues beyond the school day and that complements school based learning by improving academic performance, and inspiring students to discover their passions.

- ☛ Technology Student Association (TSA)
- ☛ Skills USA
- ☛ Robotics



### Work based learning

Often in partnership with industry/community professionals, learning experiences that engage students in acquiring and applying work-related knowledge and skills.

- ☛ Information and Communication Technology Internship



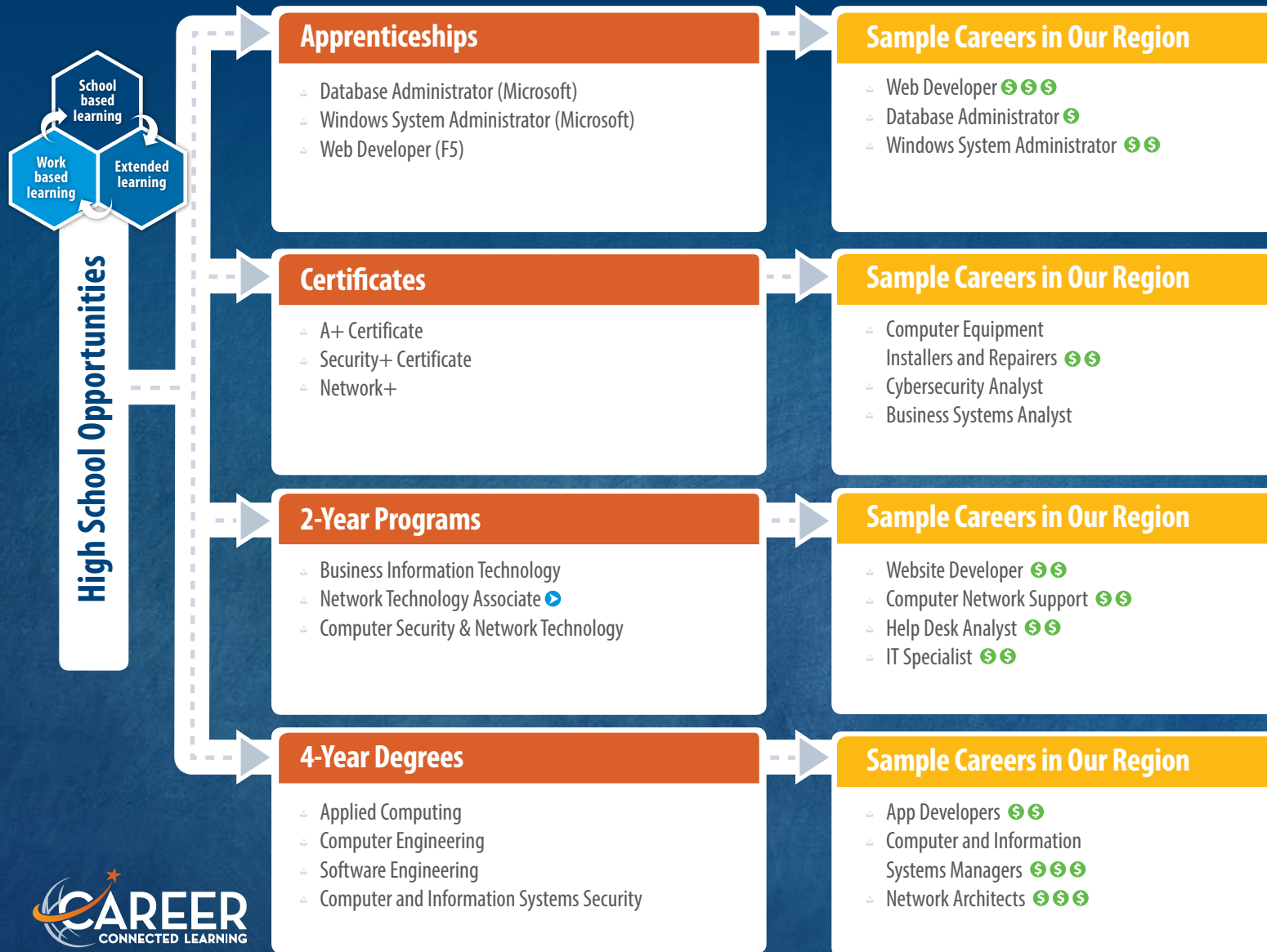
For more information regarding Everett Public Schools Career Pathways, please contact [careerconnected@everettsd.org](mailto:careerconnected@everettsd.org); each high school's career specialist and counselors can review this document with students and families.

Document updated: Feb. 2020

# Pathways to Information & Communication Technology Careers



Information and communication technology jobs focus on digital tools, technology, and working with complex systems. This sector is particularly accessible through certificate programs, and the earning potential for many of the jobs in this sector is quite high.



## SKILLS

- Passion for technology
- Good writing skills
- Identifying problems
- Good decision-making
- Active listening

## TRANSFER

▶ = Transfer degree only

## SALARIES

\$ = Max \$25/hr  
 \$\$ = Max \$26-40/hr  
 \$\$\$ = Max > \$40/hr

For more information regarding Everett Public Schools Career Pathways, please contact [careerconnected@everettsd.org](mailto:careerconnected@everettsd.org); each high school's career specialist and counselors can review this document with students and families.

Document updated: Feb. 2020

# Career Pathway Readiness Opportunities



## Energy & Sustainability



### School based learning

Career and technical education (CTE) courses as well as integration of career skills, knowledge and advising into district's core courses.

Core Courses	Exploratory Courses	Advanced Courses	Skill Center Courses
Biology in the Environment	Environmental Systems Design	AP Environmental Science	Green Sustainable Design (summer)
Chemistry	Engineering & the World	AP Biology	
Physics in the Universe		AP Chemistry	
		AP Capstone: Research in Science and Engineering	



### Extended learning

Education that continues beyond the school day and that complements school based learning by improving academic performance, and inspiring students to discover their passions.

- Technology Student Association (TSA)
- Future Farmers of America (FFA)
- Environthon - Snohomish County



### Work based learning

Often in partnership with industry/community professionals, learning experiences that engage students in acquiring and applying work-related knowledge and skills.

- Energy and Sustainability Internship



For more information regarding Everett Public Schools Career Pathways, please contact [careerconnected@everettsd.org](mailto:careerconnected@everettsd.org); each high school's career specialist and counselors can review this document with students and families.

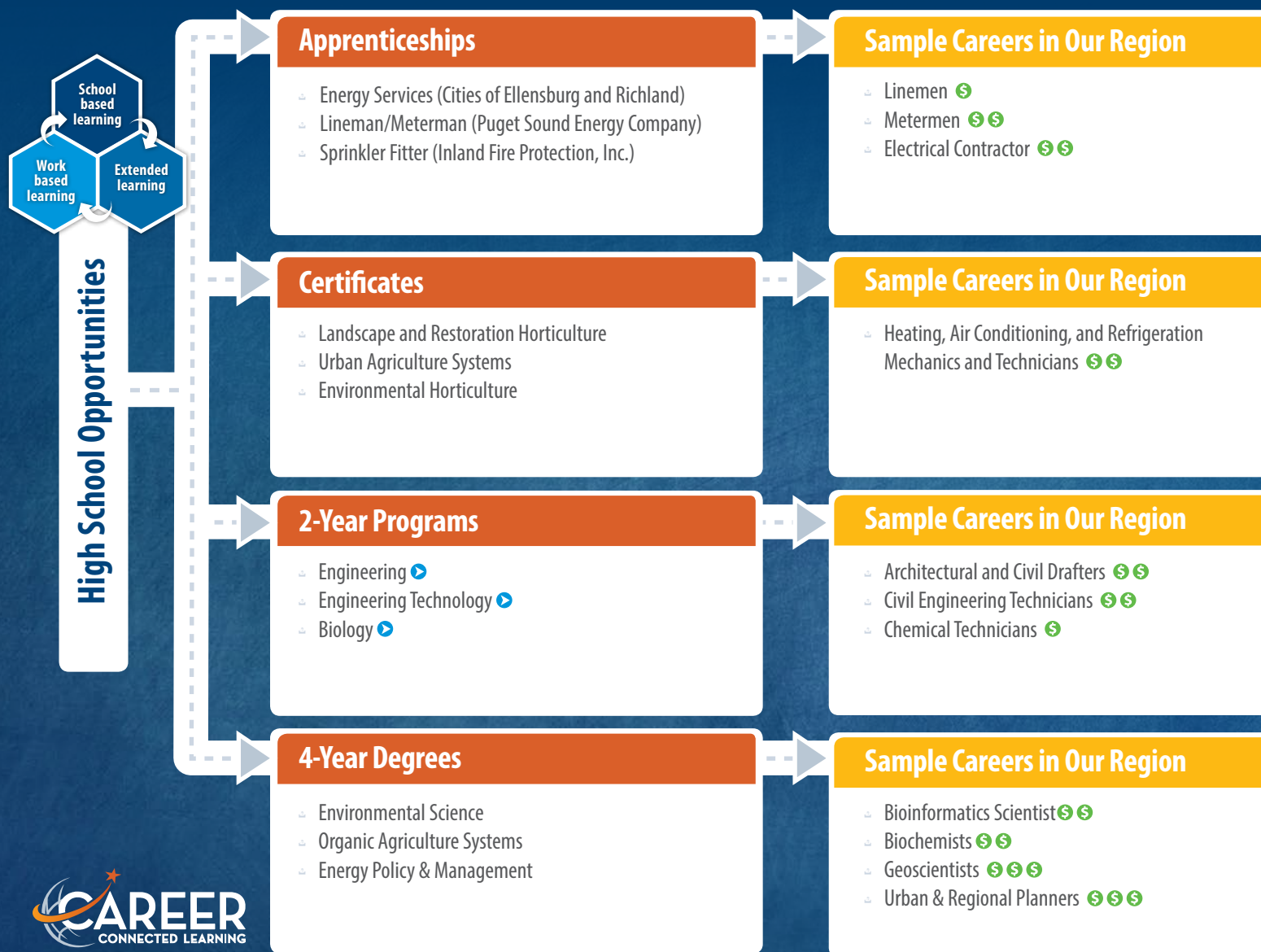
Document updated: Feb. 2020



# Pathways to Energy & Sustainability Careers



Energy and sustainability covers a variety of industries, from energy generation to fire prevention and agriculture. People in this field are often scientists in a lab, working hands-on in the field, and always working to facilitate energy production and sustainability.



## SKILLS

- Planning skills
- Identifying problems
- Strong math & science skills
- Strong reading skills
- Interest in environmental
- Interest in environmental science

## TRANSFER

▶ = Transfer degree only

## SALARIES

- \$ = Max \$25/hr
- \$\$ = Max \$26-40/hr
- \$\$\$ = Max > \$40/hr

For more information regarding Everett Public Schools Career Pathways, please contact [careerconnected@everettsd.org](mailto:careerconnected@everettsd.org); each high school's career specialist and counselors can review this document with students and families.

Document updated: Feb. 2020

# Career Pathway Readiness Opportunities



## Education Careers



### School based learning

Career and technical education (CTE) courses as well as integration of career skills, knowledge and advising into district's core courses.

Core Courses	Exploratory Courses	Advanced Courses	Skill Center Courses
	Childhood Development	Intro to Education	Careers in Education



### Extended learning

Education that continues beyond the school day and that complements school based learning by improving academic performance, and inspiring students to discover their passions.

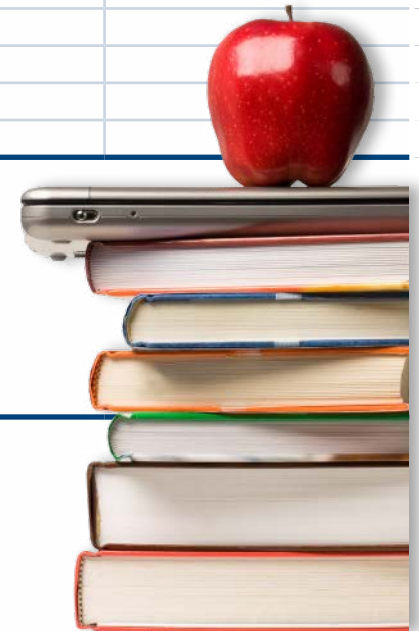
- Educators Rising
- Family, Career and Community Leaders of America (FCCLA)



### Work based learning

Often in partnership with industry/community professionals, learning experiences that engage students in acquiring and applying work-related knowledge and skills.

- Educational Studies Internship

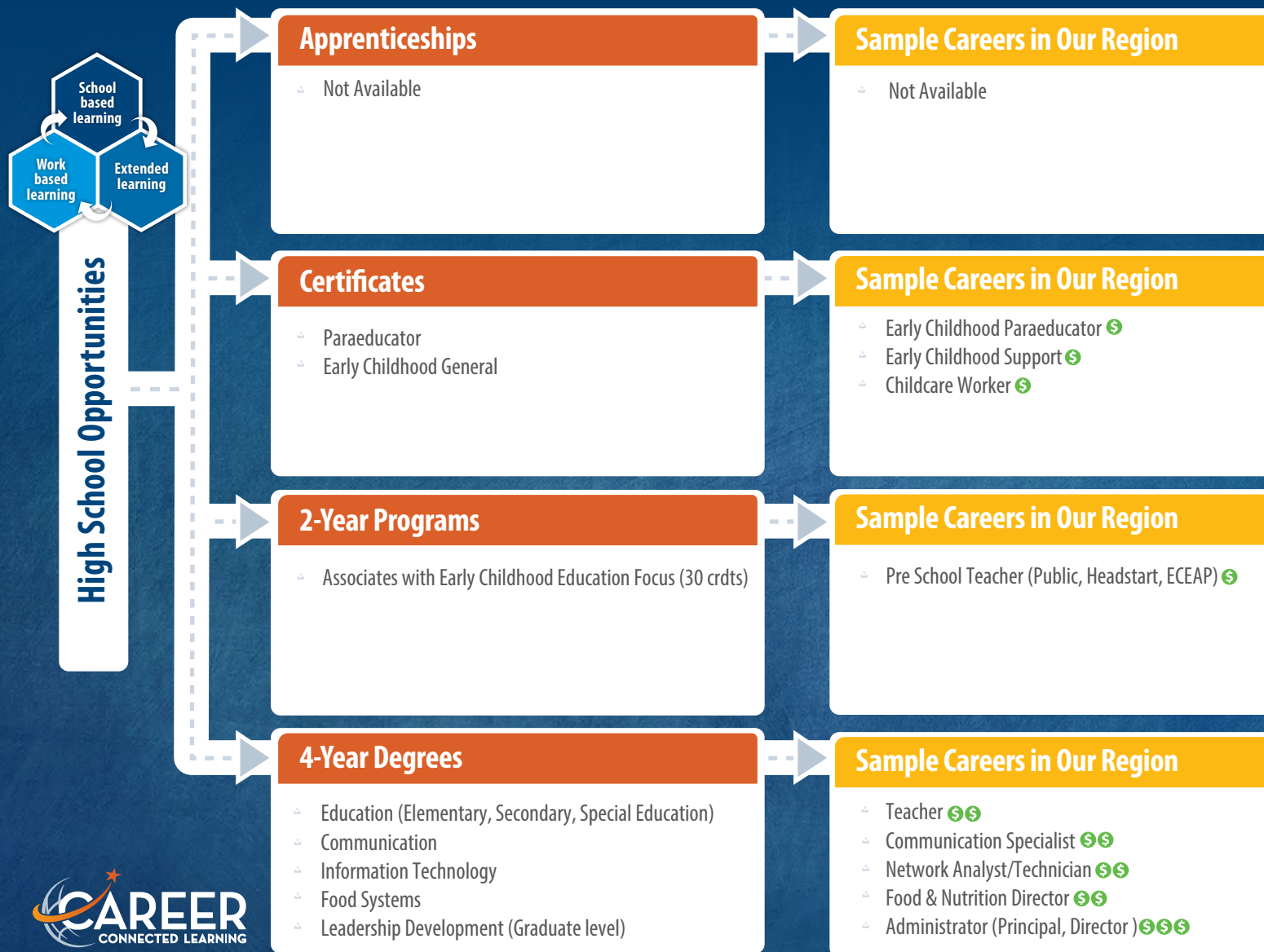


For more information regarding Everett Public Schools Career Pathways, please contact [careerconnected@everettsd.org](mailto:careerconnected@everettsd.org); each high school's career specialist and counselors can review this document with students and families.

Document updated: Feb. 2020

# Pathways to Education Careers

Careers in education can impact students of all ages. The demand for teachers, para educators, councilors and administrators is high, especially for those with certification in areas including special education, science, math, and English language learners.



## SKILLS

- Active listening
- Instructing
- Speaking
- Juggling priorities
- Sensitivity to problems
- Monitoring

## TRANSFER

▶ = Transfer degree only

## SALARIES

- \$ = Max \$25/hr
- \$ \$ = Max \$26-40/hr
- \$ \$ \$ = Max > \$40/hr

For more information regarding Everett Public Schools Career Pathways, please contact [careerconnected@everettsd.org](mailto:careerconnected@everettsd.org); each high school's career specialist and counselors can review this document with students and families.

Document updated: Feb. 2020

# Career Pathway Readiness Opportunities



## Business & Professional Services



### School based learning

Career and technical education (CTE) courses as well as integration of career skills, knowledge and advising into district's core courses.

Core Courses	Exploratory Courses	Advanced Courses	Skill Center Courses
Algebra 1 and 2	Foundations of Business & Marketing	AP Macroeconomics	Fashion Merchandising
	Business Law	AP Microeconomics	Entrepreneurship (WANIC)
	Economics	Business Operations	Personal Finance (WANIC)
	Accounting 1	Accounting 2	
	Business & Finance	Entrepreneurship	
	Social Media Marketing	Marketing Operations	



### Extended learning

Education that continues beyond the school day and that complements school based learning by improving academic performance, and inspiring students to discover their passions.

- ☞ DECA
- ☞ Future Business Leaders of America (FBLA)



### Work based learning

Often in partnership with industry/community professionals, learning experiences that engage students in acquiring and applying work-related knowledge and skills.

- ☞ Business & Professional Services Internship

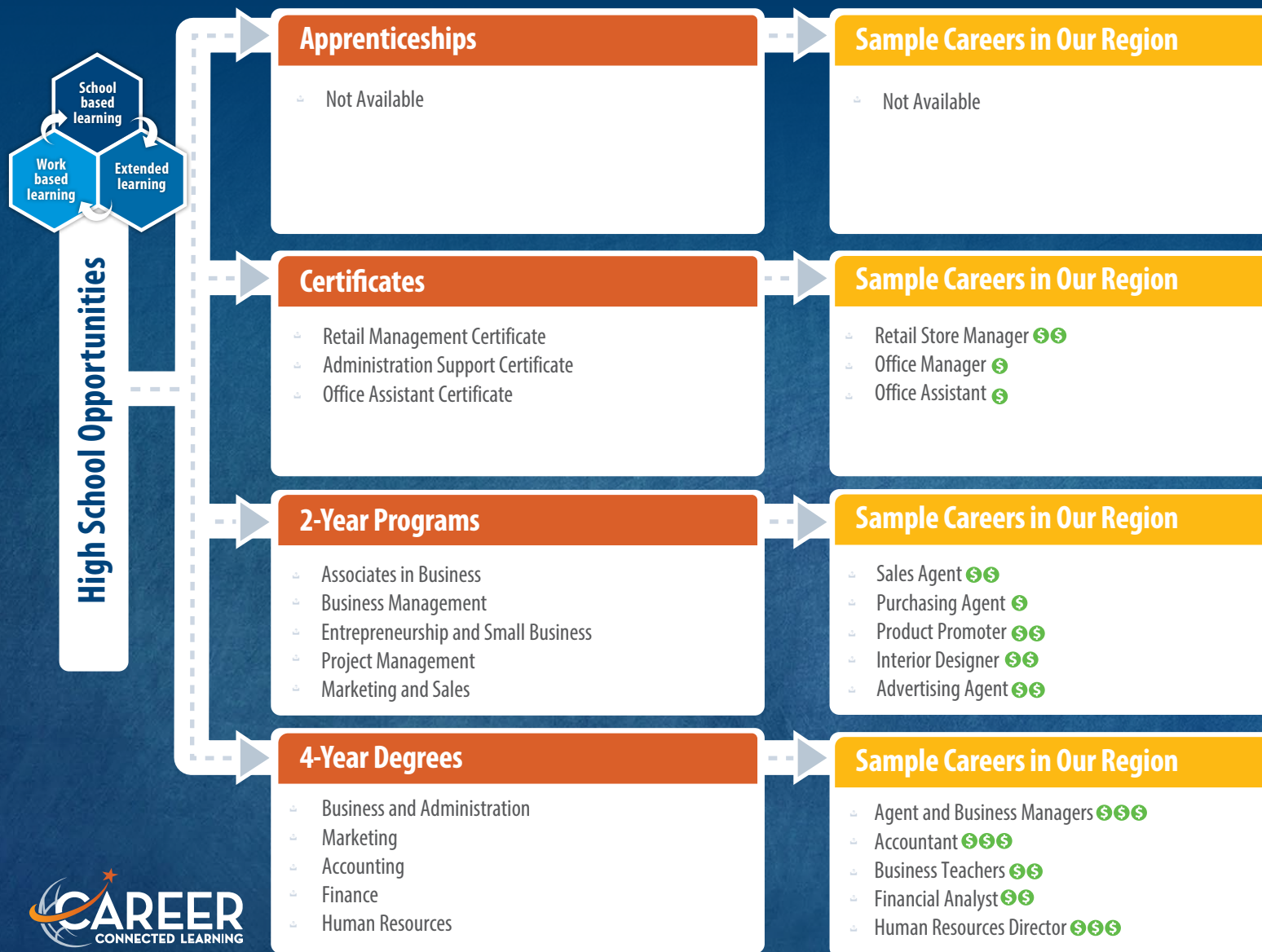


For more information regarding Everett Public Schools Career Pathways, please contact [careerconnected@everettsd.org](mailto:careerconnected@everettsd.org); each high school's career specialist and counselors can review this document with students and families.

Document updated: Feb. 2020

# Pathways to Business & Professional Services

Business careers cover variety of industries including finance, information technology, healthcare, hospitality, and marketing and retail. Depending on an individual's interests and skills careers can be found at all levels, from entry level to management.



## SKILLS

- Active listening
- Identifying problems
- Seeing details up close
- Organizing information
- Communicate in writing

## TRANSFER

▶ = Transfer degree only

## SALARIES

- 💰 = Max \$25/hr
- 💰💰 = Max \$26-40/hr
- 💰💰💰 = Max > \$40/hr

For more information regarding Everett Public Schools Career Pathways, please contact [careerconnected@everettsd.org](mailto:careerconnected@everettsd.org); each high school's career specialist and counselors can review this document with students and families.

Document updated: Feb. 2020